

## SDV Job #: 7047172 - Penn Station V2B-R (Ashland, KY)

**Service Region:** 361 - Cincinnati OH Service  
**Service Person:** Travis Huff

**Customer Number:** 1029741      **Customer Name:** Region 120

**Address:** PENN STATION  
1438 Booth Quillen Road  
Ashland, KY 41102

**Region Job #:** 6314745  
**Region Job Name:** Penn Station V2B-R (Ashland, KY)

**Sales Region:** 120 - Air Solutions  
**Sales Person:** Joe Hertenstein

**Created By:** Travis Huff      **Creation Date:** 11/20/2024 2:57 PM  
**Last Modified By:** Travis Huff      **Last Modified Date:** 11/22/2024 3:30 PM

**Dining Room Pressure:** 0      **Kitchen Pressure:** 0  
**Hours On Job:** 0      **Extra Hours:** 0

**Completed:** Yes      **Completed By:** Travis Huff  
**Completion Date:** 11/22/2024 3:30 PM

### Job Site Meeting

NONE

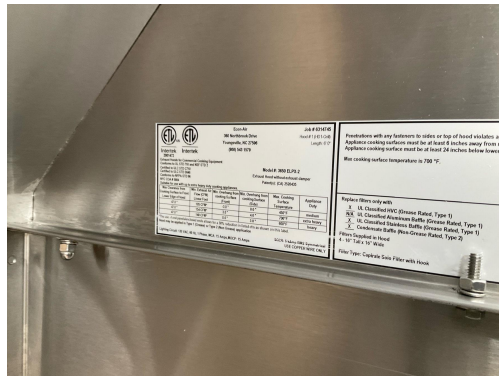
### Hood Group 1

**Exhaust CFM:** Design = 1120      Initial = 1317      Final = 1172      (104.6% of design)

**Other Notes:**

N/A

See attachment(s): [202411211237560073.mp4]



### Hood 1 ( HD1-Grill ) (HD1-Grill)

**Model:** 3650ELPX-2

**Length:** 6' 0"

**Exhaust CFM:**  
(104.6% of design)

Design = 1120

Initial = 1317

Final = 1172

### Installation

Hung Using appropriate material to safely secure hood.

Design: **Yes**

Actual: **No**

**NonCompliance Notes:**

*No double-nut.*

Specify Inappropriately Hung Hood Issues:

Actual: **Double nut not used**

COOKING EQUIPMENT ON AND OPERATING

Design: **Yes**

Actual: **No**

COOKING EQUIPMENT INSTALLED AS CLOSE TO BACK WALL AS POSSIBLE

Design: **Yes**

Actual: **Yes**

END PANELS INSTALLED CORRECTLY

Design: **Yes**

Actual: **Yes**

Smoke Test Performed on all Hoods? Upload Video

Design: **Yes**

Actual: **Yes**

Measure the Front lower edge of the Hood to the Floor. (AFF)

Design: **72**

Actual: **72**

Are there combustibles within 18" of the Hood?

Design: **No**

Actual: **No**

### Filters

**Type:** Captrate Solo

**Filter 1** Size: 16x16 Initial Velocity: 246 fpm Final Velocity: 225 fpm  
Initial CFM: 375 Final CFM: 343 Fan: #1 - EADU85H (KEF1)

**Filter 2** Size: 16x16 Initial Velocity: 206 fpm Final Velocity: 188 fpm  
Initial CFM: 314 Final CFM: 287 Fan: #1 - EADU85H (KEF1)

**Filter 3** Size: 16x16 Initial Velocity: 185 fpm Final Velocity: 171 fpm  
Initial CFM: 282 Final CFM: 261 Fan: #1 - EADU85H (KEF1)

**Filter 4** Size: 16x16 Initial Velocity: 227 fpm Final Velocity: 184 fpm  
Initial CFM: 346 Final CFM: 281 Fan: #1 - EADU85H (KEF1)

### Hood Group 2

**Exhaust CFM:** Design = 0 Initial = 0 Final = 0 (0% of design)

**Supply CFM:** Design = 1000 Initial = 1321 Final = 1096 (109.6% of design)

**Supply AC CFM:** Design = 0 Initial = 102 Final = 102 (0% of design)

### Hood 2 ( HD1-PSP ) (HD1-PSP)

**Model:** 246Misc ACPSP-ONLY

**Length:** 6' 0"

**Exhaust CFM:** Design = 0 Initial = 0 Final = 0 (0% of design)

**Installation**

Hung Using appropriate material to safely secure hood. Design: **Yes** Actual: **No**

**NonCompliance Notes:**

*No double-nut.*

Specify Inappropriately Hung Hood Issues: Actual: **Double nut not used**

COOKING EQUIPMENT ON AND OPERATING Design: **Yes** Actual: **No**

COOKING EQUIPMENT INSTALLED AS CLOSE TO BACK WALL AS POSSIBLE Design: **Yes** Actual: **Yes**

Smoke Test Performed on all Hoods? Upload Video Design: **Yes** Actual: **Yes**

Measure the Front lower edge of the Hood to the Floor. (AFF) Design: **80** Actual: **80**

Are there combustibles within 18" of the Hood? Design: **No** Actual: **No**

**Supply**

**Supply CFM:** Design = 1000 Initial = 1321 Actual = 1096  
(109.6% of design) Fan: #4 - EA1-D.250-15D (HMUA1)

**AC CFM:** Design = 0 Initial = 102 Actual = 102  
(0% of design)

**PSP 1**

**Orientation:** Front **Length:** 6' 0" **Width:** 14"

**Banks:** 1 **Blanks:** 1

**CFM:** Design = 1000 Initial = 1321 Final = 1096  
(0% of design)

**Velocity:** Design = 168 Initial = 0 Final = 0  
(0% of design)

**AC CFM:** Design = 465 Initial = 102 Final = 102  
(0% of design)

**AC Velocity:** Design = 0 Initial = 0 Final = 0  
(0% of design)

**Readings:**

- 1: Initial: 195 fpm, Final: 158 fpm
- 2: Initial: 184 fpm, Final: 142 fpm
- 3: Initial: 202 fpm, Final: 166 fpm
- 4: Initial: 222 fpm, Final: 182 fpm
- 5: Initial: 209 fpm, Final: 169 fpm
- 6: Initial: 187 fpm, Final: 178 fpm

**AC Readings:**

1: Initial: 53 fpm, Final: 53 fpm  
 3: Initial: 50 fpm, Final: 50 fpm  
 5: Initial: 41 fpm, Final: 41 fpm

2: Initial: 24 fpm, Final: 24 fpm  
 4: Initial: 33 fpm, Final: 33 fpm  
 6: Initial: 52 fpm, Final: 52 fpm

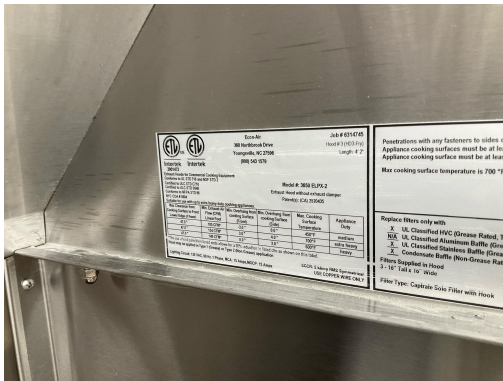
## Hood Group 4

**Exhaust CFM:** Design = 850 Initial = 1185 Final = 866 (101.9% of design)

**Other Notes:**

N/A

See attachment(s): [202411211232140234.mp4]



## Hood 3 ( HD3-Fry ) (HD3-Fry)

**Model:** 3650ELPX-2 **Length:** 4' 2"  
**Exhaust CFM:** Design = 850 Initial = 1185 Final = 866  
 (101.9% of design)

### Installation

Hung Using appropriate material to safely secure hood. Design: **Yes** Actual: **No**

**NonCompliance Notes:**

*No double-nut.*

Specify Inappropriately Hung Hood Issues: Actual: **Double nut not used**

COOKING EQUIPMENT ON AND OPERATING Design: **Yes** Actual: **No**

COOKING EQUIPMENT INSTALLED AS CLOSE TO BACK WALL AS POSSIBLE Design: **Yes** Actual: **Yes**

END PANELS INSTALLED CORRECTLY Design: **Yes** Actual: **Yes**

Smoke Test Performed on all Hoods? Upload Video Design: **Yes** Actual: **Yes**

Measure the Front lower edge of the Hood to the Floor. (AFF) Design: **72** Actual: **72**

Are there combustibles within 18" of the Hood? Design: **No** Actual: **No**

## Filters

**Type:** Captrate Solo

**Filter 1** Size: 16x16 Initial Velocity: 270 fpm Final Velocity: 207 fpm  
Initial CFM: 412 Final CFM: 316 Fan: #3 - EADU85H (KEF3-FRY)

**Filter 2** Size: 16x16 Initial Velocity: 250 fpm Final Velocity: 178 fpm  
Initial CFM: 381 Final CFM: 272 Fan: #3 - EADU85H (KEF3-FRY)

**Filter 3** Size: 16x16 Initial Velocity: 257 fpm Final Velocity: 182 fpm  
Initial CFM: 392 Final CFM: 278 Fan: #3 - EADU85H (KEF3-FRY)

## Hood Group 5

**Exhaust CFM:** Design = 0 Initial = 0 Final = 0 (0% of design)

**Supply CFM:** Design = 630 Initial = 737 Final = 605 (96% of design)

**Supply AC CFM:** Design = 0 Initial = 259 Final = 259 (0% of design)

## Hood 4 ( HD3-PSP ) (HD3-PSP)

**Model:** 246Misc ACPSP-ONLY **Length:** 4' 2"

**Exhaust CFM:** Design = 0 Initial = 0 Final = 0 (0% of design)

## Installation

Hung Using appropriate material to safely secure hood. Design: **Yes** Actual: **No**

### NonCompliance Notes:

*No double-nut.*

Specify Inappropriately Hung Hood Issues: Actual: **Double nut not used**

COOKING EQUIPMENT ON AND OPERATING Design: **Yes** Actual: **No**

COOKING EQUIPMENT INSTALLED AS CLOSE TO BACK WALL AS POSSIBLE Design: **Yes** Actual: **Yes**

Smoke Test Performed on all Hoods? Upload Video Design: **Yes** Actual: **Yes**

Measure the Front lower edge of the Hood to the Floor. (AFF) Design: **80** Actual: **80**

Are there combustibles within 18" of the Hood? Design: **No** Actual: **No**

## Supply

<b>Supply CFM:</b> (96% of design)	Design = 630 Fan: #4 - EA1-D.250-15D (HMUA1)	Initial = 737	Actual = 605
<b>AC CFM:</b> (0% of design)	Design = 0	Initial = 259	Actual = 259

## PSP 1

<b>Orientation:</b>	Front	<b>Length:</b>	4' 2"	<b>Width:</b>	14"
<b>Banks:</b> 1	<b>Blanks:</b> 1				
<b>CFM:</b> (0% of design)	Design = 630	Initial = 737	Final = 605		
<b>Velocity:</b> (0% of design)	Design = 157	Initial = 0	Final = 0		
<b>AC CFM:</b> (0% of design)	Design = 250	Initial = 259	Final = 259		
<b>AC Velocity:</b> (0% of design)	Design = 0	Initial = 0	Final = 0		

---

### Readings:

1: Initial: 171 fpm, Final: 137 fpm	2: Initial: 194 fpm, Final: 149 fpm
3: Initial: 147 fpm, Final: 134 fpm	4: Initial: 141 fpm, Final: 125 fpm
5: Initial: 169 fpm, Final: 132 fpm	6: Initial: 167 fpm, Final: 135 fpm

---

### AC Readings:

1: Initial: 189 fpm, Final: 189 fpm	2: Initial: 136 fpm, Final: 136 fpm
3: Initial: 125 fpm, Final: 125 fpm	4: Initial: 118 fpm, Final: 118 fpm
5: Initial: 177 fpm, Final: 177 fpm	6: Initial: 209 fpm, Final: 209 fpm

## Fans

### Fan 1 - EADU85H (KEF1) (KEF1)

**Model:** EADU85H

**Other Notes:**

N/A



## Exhaust

**Exhaust CFM:** Design = 1250 Actual = 1172 (94% of design)

### Other Notes:

*Hood design CFM is 1120 and was balanced to 105% of design.*

*Fan is installed over hood 3. Fans are identical*

Record the ECM Speed		Actual:	<b>60</b>
VOLTS	Design:	<b>115</b>	Actual: <b>123</b>
Do all legs measure the same phase to phase and phase to ground voltage? If not, include notes with all phase to phase and phase to ground voltages.	Design:	<b>Yes</b>	Actual: <b>Yes</b>
HP	Design:	<b>0.75</b>	Actual: <b>0.75</b>
HUB SET SCREW TIGHT	Design:	<b>Yes</b>	Actual: <b>Yes</b>
FAN LEVEL	Design:	<b>Yes</b>	Actual: <b>Yes</b>
ROTATION	Design:	<b>Correct</b>	Actual: <b>Correct</b>
UNIT VIBRATION	Design:	<b>Good</b>	Actual: <b>Good</b>
FLA	Design:	<b>8.9</b>	Actual: <b>2.3</b>
OVERLOAD SET POINT	Design:	<b>8.9</b>	Actual: <b>8.9</b>
PHASE	Design:	<b>1</b>	Actual: <b>1</b>
Unit within five miles from the coast?		Actual:	<b>No</b>
INSPECT ALL EXTERIOR SIDES OF UNIT. ANY VISIBLE DAMAGE	Design:	<b>No</b>	Actual: <b>No</b>
SPEED CONTROL VOLTAGE	Design:	<b>65</b>	Actual: <b>N/A</b>
RPM - DESIGN	Design:	<b>1278</b>	Actual: <b>1080</b>
RPM - MAX	Design:	<b>1900</b>	Actual: <b>N/A</b>
RPM - MAX RECOMMENDED	Design:	<b>1600</b>	Actual: <b>N/A</b>

## Fan 2 - EADU33H (KEF2-OVEN) (KEF2-OVEN)

**Model:** EADU33H

**Other Notes:**

N/A



### Exhaust

<b>Exhaust CFM:</b>	Design = 600	Actual = 602	(100% of design)
Record the ECM Speed			Actual: <b>82</b>
VOLTS		Design: <b>115</b>	Actual: <b>124</b>
Do all legs measure the same phase to phase and phase to ground voltage? If not, include notes with all phase to phase and phase to ground voltages.		Design: <b>Yes</b>	Actual: <b>Yes</b>
HP		Design: <b>0.333</b>	Actual: <b>0.33</b>
HUB SET SCREW TIGHT		Design: <b>Yes</b>	Actual: <b>Yes</b>
FAN LEVEL		Design: <b>Yes</b>	Actual: <b>Yes</b>
ROTATION		Design: <b>Correct</b>	Actual: <b>Correct</b>
UNIT VIBRATION		Design: <b>Good</b>	Actual: <b>Good</b>
FLA		Design: <b>4.3</b>	Actual: <b>3.7</b>
OVERLOAD SET POINT		Design: <b>4.3</b>	Actual: <b>4.3</b>
PHASE		Design: <b>1</b>	Actual: <b>1</b>
Unit within five miles from the coast?			Actual: <b>No</b>
INSPECT ALL EXTERIOR SIDES OF UNIT. ANY VISIBLE DAMAGE		Design: <b>No</b>	Actual: <b>No</b>
SPEED CONTROL VOLTAGE		Design: <b>65</b>	Actual: <b>N/A</b>
RPM - DESIGN		Design: <b>1299</b>	Actual: <b>1476</b>
RPM - MAX		Design: <b>2000</b>	Actual: <b>N/A</b>

**Fan 3 - EADU85H (KEF3-FRY) (KEF3-FRY)**

**Model:** EADU85H

**Other Notes:**

N/A



**Exhaust**

**Exhaust CFM:** Design = 850 Actual = 866 (102% of design)

Record the ECM Speed		Actual:	<b>49</b>
VOLTS	Design:	<b>115</b>	Actual: <b>123</b>
Do all legs measure the same phase to phase and phase to ground voltage? If not, include notes with all phase to phase and phase to ground voltages.	Design:	<b>Yes</b>	Actual: <b>Yes</b>
HP	Design:	<b>0.75</b>	Actual: <b>0.75</b>
HUB SET SCREW TIGHT	Design:	<b>Yes</b>	Actual: <b>Yes</b>
FAN LEVEL	Design:	<b>Yes</b>	Actual: <b>Yes</b>
ROTATION	Design:	<b>Correct</b>	Actual: <b>Correct</b>
UNIT VIBRATION	Design:	<b>Good</b>	Actual: <b>Good</b>
FLA	Design:	<b>8.9</b>	Actual: <b>4.6</b>
OVERLOAD SET POINT	Design:	<b>8.9</b>	Actual: <b>8.9</b>
PHASE	Design:	<b>1</b>	Actual: <b>1</b>
Unit within five miles from the coast?		Actual:	<b>No</b>
INSPECT ALL EXTERIOR SIDES OF UNIT. ANY VISIBLE DAMAGE	Design:	<b>No</b>	Actual: <b>No</b>
SPEED CONTROL VOLTAGE	Design:	<b>65</b>	Actual: <b>N/A</b>

RPM - DESIGN

Design: **1189**

Actual: **882**

RPM - MAX

Design: **1900**

Actual: **N/A**

RPM - MAX RECOMMENDED

Design: **1600**

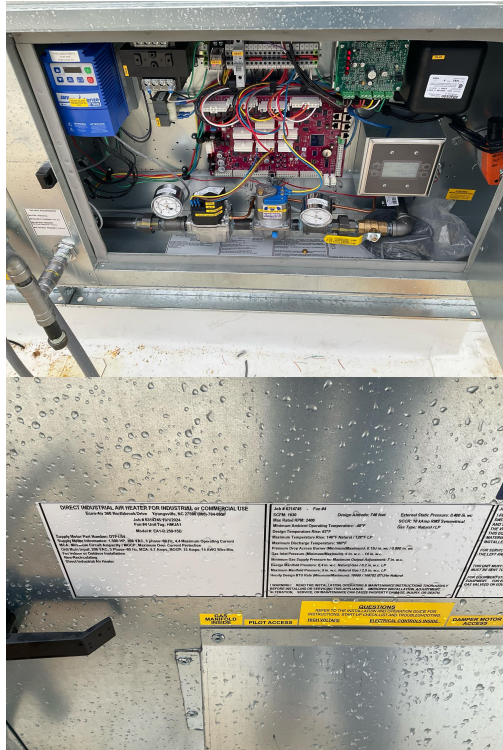
Actual: **N/A**

### Fan 4 - EA1-D.250-15D (HMUA1) (HMUA1)

**Model:** EA1-D.250-15D

**Other Notes:**

N/A



### Supply

**Supply CFM:**

Design = 1630

Actual = 1701

(104% of design)

**Other Notes:**

*Wires need to be secure/cleaned up in burner compartment*



VOLTS	Design: <b>208</b>	Actual: <b>215</b>
Is the main transformer (TR-01) tapped for the correct voltage?		Actual: <b>Yes</b>
HP	Design: <b>1.5</b>	Actual: <b>1.5</b>
HUB SET SCREW TIGHT	Design: <b>Yes</b>	Actual: <b>Yes</b>
FAN LEVEL	Design: <b>Yes</b>	Actual: <b>Yes</b>
ROTATION	Design: <b>Correct</b>	Actual: <b>Correct</b>
UNIT VIBRATION	Design: <b>Good</b>	Actual: <b>Good</b>
FLA	Design: <b>4.4</b>	Actual: <b>3</b>
OVERLOAD SET POINT	<b>N/A</b>	
PHASE	Design: <b>3</b>	Actual: <b>3</b>
DAMPER INSTALLED	Design: <b>Yes</b>	Actual: <b>Yes</b>
Unit within five miles from the coast?		Actual: <b>No</b>
INSPECT ALL EXTERIOR SIDES OF UNIT. ANY VISIBLE DAMAGE		Actual: <b>No</b>
Record the VFD HZ	Design: <b>59.7 Hz</b>	Actual: <b>49.7</b>
RPM - DESIGN	Design: <b>1740</b>	Actual: <b>1449</b>
RPM - MAX	Design: <b>2400</b>	Actual: <b>N/A</b>
RPM - MAX RECOMMENDED	Design: <b>2100</b>	Actual: <b>N/A</b>
Is Supply Fan bolted/secured to curb?	Design: <b>Yes</b>	Actual: <b>No</b>

**Other Notes:**

N/A



## Heater

### Gas Heater

GAS TYPE	Design: <b>Natural</b>	Actual: <b>Natural</b>
INLET GAS PRESSURE	Design: <b>7</b>	Actual: <b>10</b>
FREEZE STAT TEMPERATURE	Design: <b>35</b>	Actual: <b>35</b>
FREEZE STAT TIMER	Design: <b>10</b>	Actual: <b>10</b>
SPACE SET POINT	Design: <b>N/A</b>	Actual: <b>N/A</b>
INTAKE SET POINT	Design: <b>45</b>	Actual: <b>50</b>
DISCHARGE SET POINT	Design: <b>55</b>	Actual: <b>60</b>
HIGH LIMIT SET POINT		Actual: <b>170</b>

### Direct Fired Heater

**Housing Size:** 1

**Burner Profile Pressure:** 0"

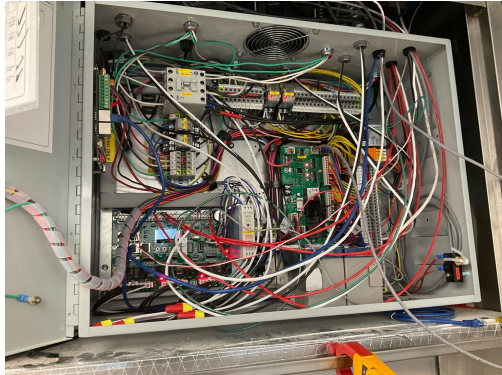
PILOT FLAME SIGNAL	Design: <b>12</b>	Actual: <b>16.1</b>
TEMP RISE	Design: <b>63</b>	Actual: <b>63</b>
HIGH FIRE MANIFOLD GAS PRESSURE	Design: <b>0.4</b>	Actual: <b>0.04</b>
HIGH FIRE INLET PRESSURE		Actual: <b>9.5</b>
HIGH FIRE FLAME SIGNAL	Design: <b>12</b>	Actual: <b>16.1</b>
BURNER DIFFERENTIAL PRESSURE	Design: <b>0.3</b>	Actual: <b>0.36</b>
LOW MANIFOLD GAS PRESSURE		Actual: <b>-0.8</b>
MODULATION TIME	Design: <b>4</b>	Actual: <b>1</b>
LOW FIRE FLAME SIGNAL	Design: <b>12</b>	Actual: <b>16.1</b>

**ECP 1 - SC-E013022MA ( ECP1 ) (ECP1)**

**Package #:** SC-E013022MA

**Other Notes:**

N/A



**Smart Control**

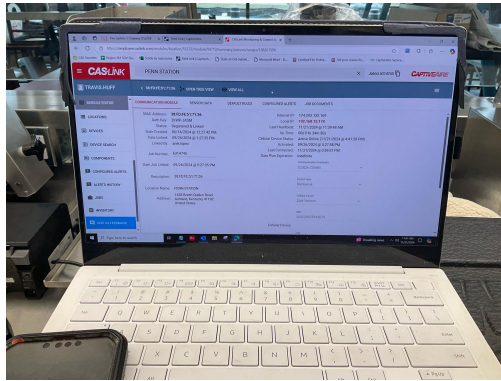
GAS VALVE RESET WORKS	Design: <b>Yes</b>	Actual: <b>Yes</b>
ROOM TEMPERATURE OFFSET	Design: <b>22</b>	Actual: <b>22</b>
HOW MANY FAN ZONES ARE THERE	Design: <b>2</b>	Actual: <b>2</b>
HYSTERESIS TEMPERATURE		Actual: <b>2</b>
Room Sensor Type	Design: <b>RoomSensor</b>	Actual: <b>Preset</b>
What is Preset temperature set to?		Actual: <b>75</b>
ALL TEMP SENSORS ARE WIRED IN	Design: <b>Yes</b>	Actual: <b>Yes</b>
Do any of the light circuits exceed 1400W?	Design: <b>No</b>	Actual: <b>No</b>
ALL LIGHTS WORK	Design: <b>Yes</b>	Actual: <b>Yes</b>
ALL FAULTS CLEARED	Design: <b>Yes</b>	Actual: <b>Yes</b>
ECPM03 HARDWARE REVISION	Design: <b>04</b>	Actual: <b>04</b>
ECPM03 PROGRAM VERSION	Design: <b>2.17.02</b>	Actual: <b>2.17.02</b>
CASHMI HARDWARE REVISION	Design: <b>05</b>	Actual: <b>05</b>
CASHMI PROGRAM VERSION	Design: <b>2.17.02</b>	Actual: <b>2.17.02</b>
ECPM03 DATE AND TIME ACCURATE	Design: <b>Yes</b>	Actual: <b>Yes</b>

**BMS & Monitoring**

BMS TYPE	Design: <b>CASLink</b>	Actual: <b>CASLink</b>
CASLINK COMMUNICATION TYPE	Design: <b>Cellular</b>	Actual: <b>Cellular</b>
Cellular status is Active Online?	Design: <b>Yes</b>	Actual: <b>Yes</b>
CASLink Registration Wizard was completed?	Design: <b>Yes</b>	Actual: <b>Yes</b>
CASLink Module has a current heartbeat?	Design: <b>Yes</b>	Actual: <b>Yes</b>

**Other Notes:**

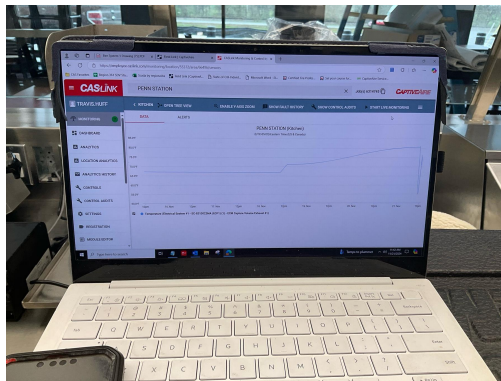
N/A



All devices connected to the SCADA are reporting live data?	Design: <b>Yes</b>	Actual: <b>Yes</b>
---	--------------------	--------------------

**Other Notes:**

N/A



Devices were assigned to an area and named appropriately?	Design: <b>Yes</b>	Actual: <b>Yes</b>
---	--------------------	--------------------

**Sensors**

T2

SENSOR TYPE	Design: <b>Duct Stat</b>	Actual: <b>Duct Stat</b>
SENSOR LOCATION	Design: <b>H1CV1</b>	Actual: <b>H1CV1</b>
FAN NUMBER	Design: <b>1</b>	Actual: <b>1</b>

### T3

SENSOR TYPE	Design: <b>Duct Stat</b>	Actual: <b>Duct Stat</b>
SENSOR LOCATION	Design: <b>H3CV1</b>	Actual: <b>H3CV1</b>
FAN NUMBER	Design: <b>3</b>	Actual: <b>3</b>

### VFDs

#### VFD 1

DESIGN CFM	Design: <b>1630</b>	Actual: <b>1701</b>
FAN DIRECTION	Design: <b>Forward</b>	Actual: <b>Forward</b>

#### DCV VFD

SUPPLY FAN # ASSIGNED	Design: <b>4</b>	Actual: <b>4</b>
OVERLOAD = P108	Design: <b>73</b>	Actual: <b>73</b>
MAX HZ	Design: <b>59.7</b>	Actual: <b>49.7</b>
ALL FAULTS CLEARED = P197	Design: <b>Yes</b>	Actual: <b>Yes</b>
P508		Actual: <b>3</b>
LOAD IN SEPARATE CONDUIT.	Design: <b>Yes</b>	Actual: <b>Yes</b>

## TANK

### TANK ECP 1 (ECP1)

**Location :** Hood #1 3650ELPX-2: Fire Cabinet Wall Mounted [4.0/4.0/4.0]

**Other Notes:**

N/A



Building Alarm Tied In	Design: <b>Yes</b>	Actual: <b>No</b>
Trouble Relay Tied In	Design: <b>Yes</b>	Actual: <b>No</b>
TANK Board Version	Design: <b>2.3</b>	Actual: <b>2.3</b>
TANK Board Updated to latest Software Version		Actual: <b>Yes</b>
TANK Board Software Version	Design: <b>1.71</b>	Actual: <b>1.71</b>
Internet Connection Type		Actual: <b>Cellular</b>

### TANK Fire Suppression 1 (fs1)

**Location :** Hood #1 - Utility Cabinet Wall Mount

#### Electrician

TANK Control Panel Wired	Design: <b>Yes</b>	Actual: <b>Yes</b>
UDS Appliance Kill Switch (if equipped) Wired	<b>N/A</b>	
Wall Mounted COPRE Wired to Control Panel	Design: <b>Yes</b>	Actual: <b>Yes</b>
Verify Power Supply is 27.5VDC		Actual: <b>Yes</b>

#### Fire System Contractor w/CAS Supervision

Verify kitchen line up with drawings in NOLA?	Actual: <b>Correct</b>
---	------------------------

Gas Valve Wired (In Conduit)	Design: <b>Yes</b>	Actual: <b>No</b>
Are all overlapping nozzles within 35-50" of cooking surface?	Design: <b>Yes</b>	Actual: <b>Yes</b>
Nozzles Within 15" From Front/Back of Hazard Zone	Design: <b>Yes</b>	Actual: <b>Yes</b>
Verify overlapping nozzles are located at centerline of the 30" hazard zone (front to back) same height, aimed straight down?	Design: <b>Yes</b>	Actual: <b>Yes</b>
Is there a Salamander or Upright Broiler Present?		Actual: <b>No</b>
Does the depth of any appliance cooking surface exceed the listed size in the Appliance Coverage Detail chart?	Design: <b>No</b>	Actual: <b>No</b>
All dedicated appliances, duct and plenum are utilizing TANK appliance nozzles (3070-3/8H-10-SS)?	Design: <b>Yes</b>	Actual: <b>Yes</b>
Is end plenum nozzle installed 0-6" into plenum (From end of hood/hazard to center of nozzle)?	Design: <b>Yes</b>	Actual: <b>Yes</b>
Are TANK appliance nozzles spaced no more than 12"(From end of Hazard zone to center of first nozzle and end of hazard zone to center of last nozzle)?	Design: <b>Yes</b>	Actual: <b>Yes</b>
Did the appliance lineup change from the original design?	Design: <b>No</b>	Actual: <b>No</b>
Did the fire system appliance drops change from the original design?	Design: <b>No</b>	Actual: <b>No</b>
Does Fire System cover a Wok?		Actual: <b>No</b>
Does dedicated TANK appliance nozzle piping exceed maximum pipe length of 10 ft?	Design: <b>No</b>	Actual: <b>No</b>
Does plenum branch piping exceed maximum pipe length of 3ft?	Design: <b>No</b>	Actual: <b>No</b>
Does the Supply line piping to first overlapping nozzle exceed 42 ft?	Design: <b>No</b>	Actual: <b>No</b>
Is Back-shelf a minimum of 18" Vertically off Appliance	<b>N/A</b>	
Back-shelf Overhang less than 12"	<b>N/A</b>	
No appliance drop has more than 2 nozzles?	Design: <b>True</b>	Actual: <b>True</b>
Is all piping except appliance drops 3/8" Blackiron, Chrome plated, Stainless Steel or 1/2" Copper?	Design: <b>Yes</b>	Actual: <b>Yes</b>

Is all appliance drop piping 3/8" polished stainless steel or polished chrome-plated black iron?

Actual: **Yes**

Are there any fryers?

Actual: **Yes**

How many fryers are there?

Actual: **2**

Enter Width of Fryer 1 Hazard Zone:

Actual: **14**

Enter Width of Fryer 2 Hazard Zone:

Actual: **14**

Are there any Tilt Skillets?

Actual: **No**

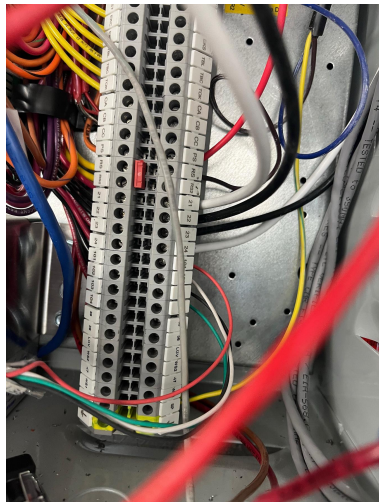
Is Manual Activation Device Wired into a Fire Loop (Must be 4 wire, in conduit)? Upload a picture of wiring connection of manual activation device.

Design: **Yes**

Actual: **Yes**

**Other Notes:**

N/A



MAD Installed 10'-20' from Hood at a Point of Egress and 42"-48" AFF	Design: <b>Yes</b>	Actual: <b>Yes</b>
Extra Fire Stat Added	<b>N/A</b>	
Fire stats are wired in a fire loop with 842 degree high temp wire when ran on top of hoods	Design: <b>Yes</b>	Actual: <b>Yes</b>
CAS Service Supervised, Assisted or Wired All Supervised Loop Connections		Actual: <b>Only verified connections at MAD and terminals</b>
Total amount of FP's used	Design: <b>38</b>	Actual: <b>38</b>

## CAS Service

Verify the correct Fire Stat is installed?		Actual: <b>360</b>
Have all shipping covers been removed from fire stats	Design: <b>Yes</b>	Actual: <b>Yes</b>
Testing of TANK system completed or being completed by:		Actual: <b>CAS Service</b>
Test System. Ensure balloons are installed on all nozzles before activating system.		Actual: <b>Ok</b>
Activate system by Manual Activation device. Did system activate and all balloons fill and/or hold pressure properly?	Design: <b>Yes</b>	Actual: <b>Yes</b>
Activate system by all Fire Stats. Did system activate and all balloons fill and/or hold pressure properly?	Design: <b>Yes</b>	Actual: <b>Yes</b>
System Activates on 120V power only	Design: <b>Yes</b>	Actual: <b>Yes</b>
Activate system on Battery Backup (Remove CORE board power and place system in Test Mode). Did system activate properly?	Design: <b>Yes</b>	Actual: <b>Yes</b>
Did the Audible Alarm Sound during each Test of the system?	Design: <b>Yes</b>	Actual: <b>Yes</b>
Size of Gas Valve.	Design: <b>1.25</b>	Actual: <b>1.25</b>
Gas Valve is Functioning Properly?	Design: <b>Yes</b>	Actual: <b>Yes</b>
Gas Valve Orientation Correct?	Design: <b>Yes</b>	Actual: <b>Yes</b>
Battery Date Code (The actual date FST wrote on batteries with paint pen during SDV)		Actual: <b>11/21/2024 6:53:00 PM</b>

Verify the correct amount of TANK appliance nozzles cover the cross-sectional Perimeter or Diameter of the Duct Riser? (If 0 - 75" perimeter equals 1 nozzles, 75 - 150" 2 nozzles, above 150" 3 nozzles)

Design: **Yes**

Actual: **Yes**

Is the system commissioned with the actuator bolted onto the TANK Fire Suppression system? Upload Picture.

Design: **Yes**

Actual: **No**

**Other Notes:**

N/A



Is pressure switch installed and functioning properly?

Design: **Yes**

Actual: **Yes**

CAUTION!: If pressure reads above 0.5 psi, immediately remove the primary actuator hose from the primary tank

Actual: **Ok**

Is appliance specific protection piped with adequate protection? Upload picture.

Design: **Yes**

Actual: **Yes**

**Other Notes:**

N/A



Use coil liquid leak detector around PAK and braided hose to check for leaks. Are there any leaks present?

Design: **No**

Actual: **No**

Do TANK bottles have 200 PSI with gauges functioning properly?  
Upload picture

Design: **Yes**

Actual: **Yes**

**Other Notes:**

N/A



Do all nozzles have metal caps?

Design: **Yes**

Actual: **Yes**

Verify Nozzle Flow Points/Tank Capabilities. Does Nozzles FP exceed Tank Capacity?

Design: **No**

Actual: **No**

Take a photo of Fire System Tag

Actual: **Ok**

Vent plug installed on wall mount FS distribution piping (in between tanks, aimed at door)?

Design: **Yes**

Actual: **Yes**

Tanks installed securely with straps and mounting hardware?

Design: **Yes**

Actual: **Yes**

After inspection of system, lubricate and change O-ring of primary actuator hose (p/n 19020).

Design: **Replaced**

Actual: **Replaced**

All Faults Are Cleared

Design: **Yes**

Actual: **Yes**

Are DIP switches set correctly according to number of Fire Groups?

Design: **Yes**

Actual: **Yes**

Is TANK system located/mounted in a climate-controlled area?

Design: **Yes**

Actual: **Yes**

**PCU Installations**

NONE

**PCU Installations**

NONE

## AQEs

NONE

## UDS

NONE